

LSV-08-34-M

三位四通电磁阀 滑阀型

说明 DESCRIPTION

A solenoid operated, 4-way, 3-position, motor center spool-type cartridge valve.

三位，四通，滑阀式电磁阀

工作 OPERATION

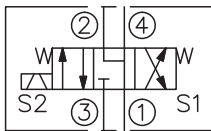
When de-energized, the valve allows flow from ② to ① and from ④ to ① while blocking ③. When the coil S1 is energized, the valve allows flow from ③ to ④ and from ② to ①; When the coil S2 is energized, the valve allows flow from ③ to ② and from ④ to ①.

失电时，②，④和①通，③口关闭；

线圈 S1 得电时，②和①通，③与④通；

线圈 S2 得电时，④和①通，③与②通。

SYMBOL



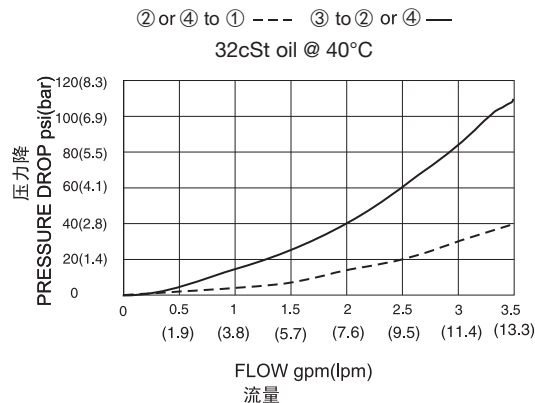
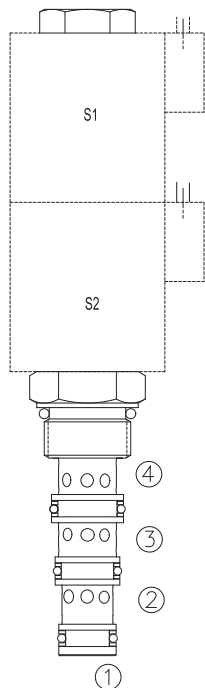
技术参数 SPECIFICATIONS

工作压力(Operating Pressure):	207bar
流量(Flow):	See PERFORMANCE CHARACTERISTIC graph.
内泄漏(Internal Leakage):	164cc/min.(毫升/分) max.
温度(Temperature):	-40°F to +212°F(-40°C to +100°C)
线圈额定负载(Coil Duty Rating):	Continuous from 85% to 115% of nominal voltage(连续工作电压)
过滤(Filtration):	See page (参见) N-1
油液(Fluids):	Mineral-based fluids with viscosities of 7.4 to 420 cSt.(矿物油粘度)
插孔(Cavity):	08-4, See page M-1
阀块材料(Body Material):	

6061-T6 aluminum alloy rated to 207bar, Steel & Ductile iron rated to 350bar

6061-T6铝,允许使用最大压力207bar 钢和球铁允许使用最大压力350bar

压力 - 流量曲线 PRESSURE DROP VS.FLOW



订货代号 TO ORDER

LSV - 08 - 34 - M - * * - * *

┌───┐
┌───┐
┌───┐
┌───┐
┌───┐
┌───┐
┌───┐

1
2
3
4
5
6
7

<p>1 功能 LSV= 电磁阀 Solenoid Valve</p> <hr/> <p>2 规格 Size 08=08 规格</p> <hr/> <p>3 流道类型 Flow Path 34= 四通</p> <hr/> <p>4 模式 M= 中位浮动 Motor Center</p>	<p>5 电压 Voltage</p> <p>1=12 VDC 2=24 VDC 3=110 VAC 4=220 VAC 5=10 VDC 7=48 VDC 8=24 VAC</p> <hr/> <p>6 线圈连接 Coil Connection</p> <p>D= Double Lead 双线 S= Single Lead 单线 H= Hirschmann 三插 ER= Deutsch Connector(Water-proof Coil) 德意志插座(防水线圈) E= Single Stud 单接线柱 B= Double Spade 双插</p>	<p>7 阀块油口 Body Porting</p> <p>空白 Blank= 不带阀块 None 4T=SAE 4 6T=SAE 6 2G=G 1/4 3G=G 3/8</p> <hr/> <p>※ 阀块详见章节 K-3 其它螺纹油口也是可选择的 Other Porting Is Available</p>
---	--	--

安装尺寸 INSTALLATION DIMENSIONS

Coil Must Be Installed With Letter Up

安装线圈时，字母必须朝上。

Unit=Millimeters

