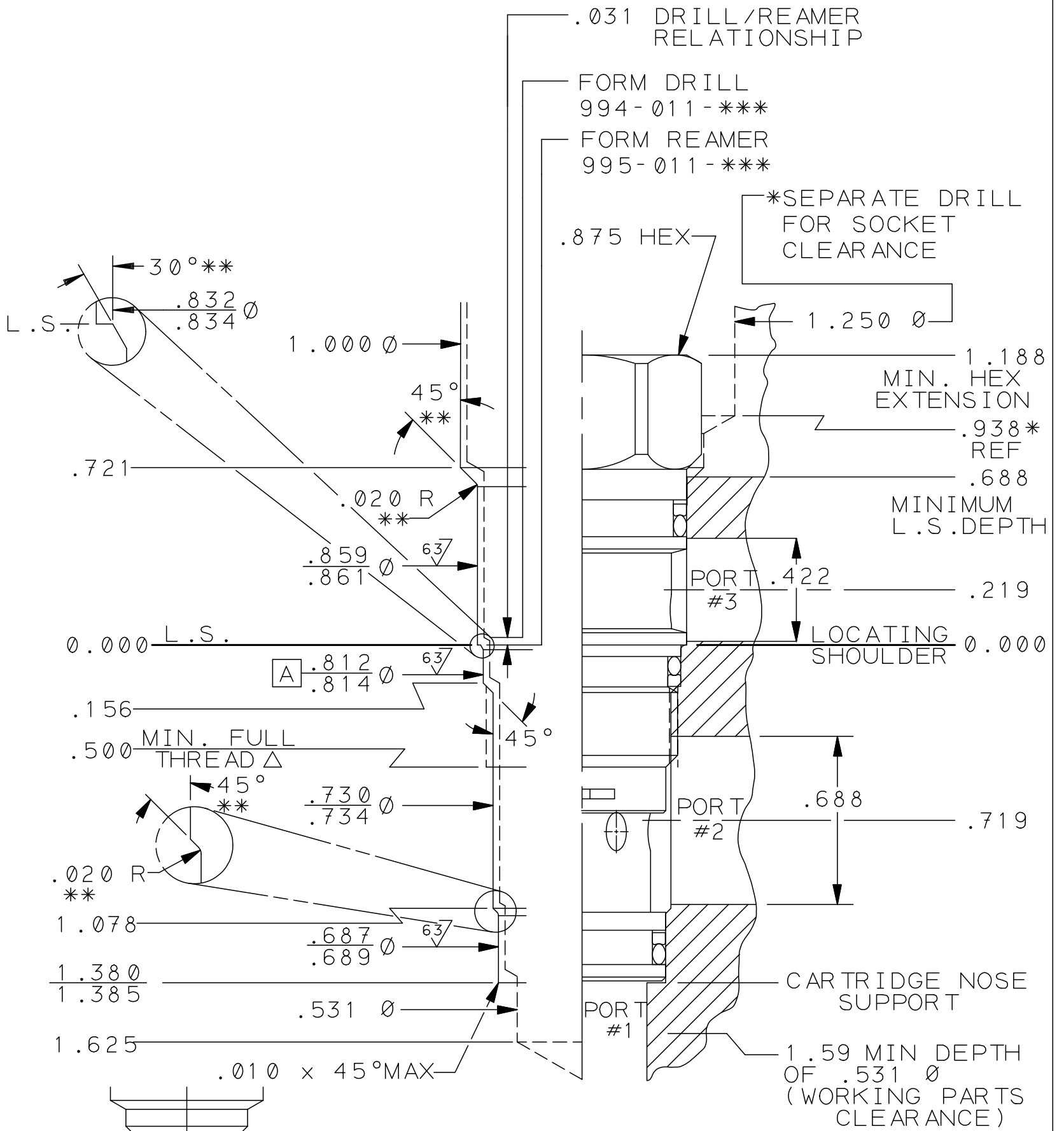


T-11A CAVITY DETAILS
 (ALL DIMENSIONS ARE IN INCHES)
 Δ M20X1.5-6H ISO (METRIC) THREAD
 .7491 / .7565 PITCH DIA.



⊙ .002 A THREAD AND ALL DIAMETERS

* SOCKET WRENCH CLEARANCE DIAMETER .
 RECOMMENDED MAXIMUM L.S. DEPTH
 WITHOUT SOCKET CLEARANCE: .938
 MINIMUM CENTERLINE-TO-EDGE
 DISTANCE: .594
 MINIMUM CENTERLINE-TO-CENTERLINE
 DISTANCE: 1.062
 NBOM CALLOUT: SUN STD T-11A CAVITY
 NBOM CODE: T11A

**ALL O-RING "LEAD IN'S" TO
 BE SMOOTH AND FREE OF NICKS
 AND SHARP EDGES

FULL SCALE

PROPRIETARY NOTICE
 THIS DRAWING DESCRIBES A
 PROPRIETARY PRODUCT OF
 SUN HYDRAULICS CORPORATION
 AND MAY NOT BE REPRODUCED OR
 GIVEN TO A THIRD PARTY WITHOUT
 WRITTEN PERMISSION FROM
 SUN HYDRAULICS CORPORATION
 © SUN HYDRAULICS CORPORATION

LET	M	REVISOR	DATE	DRN	CHK	REL	REVISION
		REVISED TOOLING P/N, REVISED DIMS FOR CAVITY/TOOLING CONSISTENCY	04MAY11	JRS	RCL	10164	
UNLESS OTHERWISE SPECIFIED DIMENSION TOL .X ±.030 .XX ±.015 .XXX ±.005 ANGLE TOL ± 1/2° FINISH 80 ✓ REMOVE ALL BURS							
TITLE: T-11A CAVITY DIMENSIONS, TOOLING, PORTING							
SCALE REF.		SERIES 1		MATERIAL			
DATE	DATE	DATE	DATE	DATE	DATE	DATE	DATE
5-7-76		5-20-76					
DRAWN: HHP CHECKED: JDA RELEASED:				HEAT TREAT & FINISH			
SUN hydraulic CORPORATION 1500 WEST UNIVERSITY PARKWAY SARASOTA, FLORIDA 34243, USA TELEPHONE (941) 555-2983				REVISION PART NO. T-11A INCH SHEET 1 OF 3			

REVISION PART NO. T-11A INCH SHEET 1 OF 3