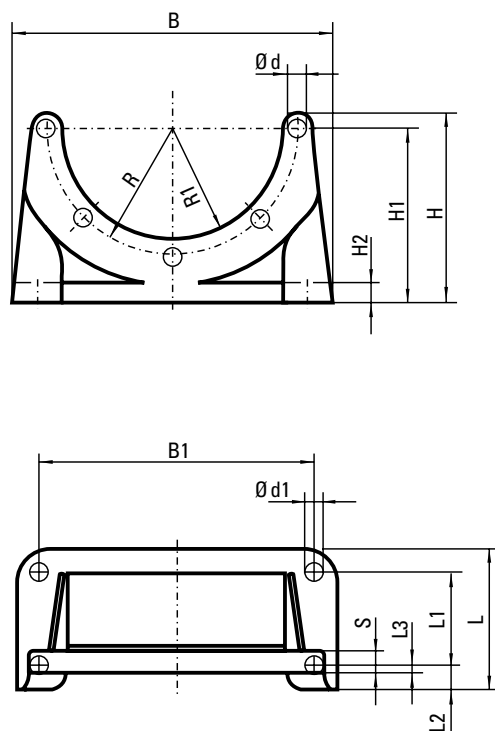


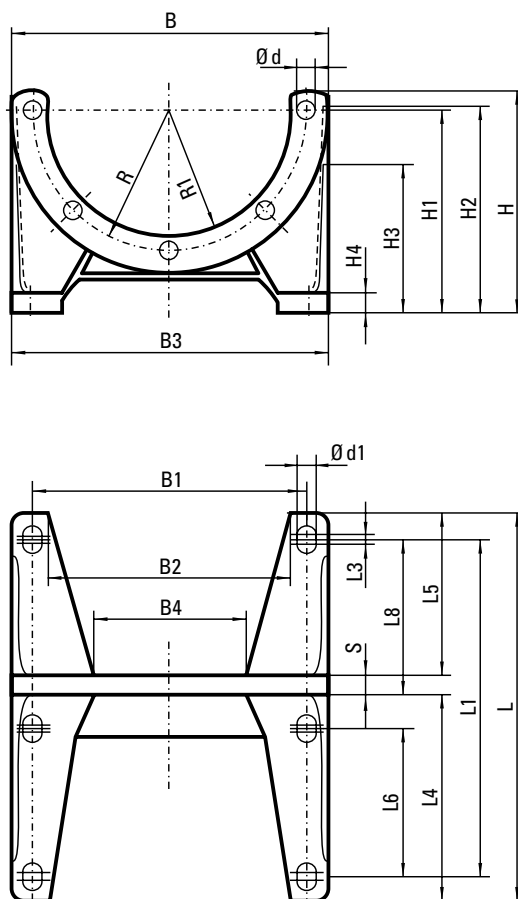
PUMPENTRÄGERFÜSSE BAUREIHE PTFL / PTFS FOOTBRACKETS SERIES PTFL / PTFS

nach VDMA 24 561, für Motorbauform IM B5
acc. to VDMA 24 561 for bellhousings, motor type IM B5

PTFL LEICHTE BAUREIHE PTFL LIGHT VERSION



PTFS SCHWERE BAUREIHE PTFS HEAVY DUTY VERSION



| Typ Type | Abmessungen Dimensions [mm] | | | | | | | | | | | | | | | | | | | | | | | |
|-------------|-----------------------------------|-----|-----|-----|-----|-----|-----|----|----|-------|-------|-----|-----|-----|-----|-----|----|-------|--------|----|----|----|----|-----|
| | B | B1 | B2 | B3 | B4 | L | L1 | L2 | L3 | L4 | L5 | L6 | H | H1 | H2 | H3 | H4 | R | R1 | S | d | d1 | L | L8 |
| PTFL 160 | 160 | 140 | | | | 80 | 50 | 15 | 7 | | | | 108 | 100 | 10 | | | 65.0 | 55.00 | 12 | 9 | 9 | | |
| PTFL 200 | 210 | 180 | | | | 90 | 60 | 15 | 4 | | | | 122 | 112 | 12 | | | 82.5 | 72.50 | 14 | 11 | 11 | | |
| PTFL 250 | 250 | 220 | | | | 110 | 60 | 25 | 21 | | | | 145 | 132 | 15 | | | 107.5 | 95.00 | 19 | | | | |
| PTFL 300 | 290 | 260 | | | | 120 | 80 | 24 | 20 | | | | 172 | 160 | 20 | | | 132.5 | 117.00 | 18 | | | | |
| PTFS 250 | 250 | 215 | 193 | 250 | 162 | 260 | 185 | | 10 | 147.5 | 67.5 | 110 | 167 | 155 | 155 | 120 | 15 | 107.5 | 95.15 | 15 | 14 | 14 | 15 | 60 |
| PTFS 300 | 300 | 265 | 243 | 300 | 207 | 270 | 225 | | 10 | 172.0 | 80.0 | 130 | 197 | 185 | 185 | 115 | 18 | 132.5 | 117.25 | 18 | | | 20 | 75 |
| PTFS 350 | 350 | 300 | 260 | 350 | 210 | 305 | 265 | | 12 | 195.0 | 92.0 | 150 | 255 | 235 | 235 | 184 | 18 | 150.0 | 130.00 | 18 | | | 25 | 90 |
| PTFS 400 | 400 | 350 | 320 | 400 | 260 | 350 | 300 | | 12 | 225.0 | 105.0 | | 277 | 260 | 232 | 220 | 20 | 175.0 | 151.00 | 20 | 18 | 18 | | 100 |
| PTFS 450 | 450 | 400 | 364 | 450 | 317 | 385 | 335 | | 12 | 250.0 | 113.0 | | 312 | 295 | 272 | 238 | 20 | 200.0 | 176.00 | 22 | | | | 110 |
| PTFS 550 | 550 | 500 | 454 | 550 | 401 | 465 | 415 | | 12 | 300.0 | 140.0 | | 365 | 350 | 335 | 285 | 25 | 250.0 | 226.00 | 25 | | | | 140 |
| PTFS 660 | 660 | 600 | 550 | 660 | 486 | 555 | 495 | | 18 | 360.0 | 165.0 | | 400 | 380 | 360 | 308 | 30 | 300.0 | 276.00 | 30 | 22 | 22 | | 165 |

PTFS 800 auf Anfrage. Bitte beachten Sie unsere Montageanleitung. Der Pumpenträger muss mit sämtlichen Befestigungsbohrungen des Fußflansches verschraubt werden, um die volle Belastbarkeit des PTFL/PTFS zu gewährleisten!

PTFS 800 on request. Please note our assembly instruction. The bellhousing must be assembled with all mounting holes of the foot bracket, to ensure the maximum loading capacity of the PTFL/PTFS!